



LKHAM

SOLO
EXHIBITION

SOYOLMAA
TSEGMID

MIRAGE
OF MY DREAM

Curated by
Dr. Christianna Bonin

I am a tree from a bird's eye view.
If mother tree sees me as a bird
I - I, I am a bird.

– *Bulgan. J*

Mirage of My Dreams, Soyolmaa's first solo exhibition in Mongolia, reveals the artist's fascination with the textures, colors, materials, and formations of the natural world: birds, plants, geological formations, and the Gobi region that she and her family call home.

Each artwork takes your senses on a journey, from the birds-eye perspective of the landscape to the microscopic detail of a petal. This sense of movement and travel is intended to evoke the artist's own efforts to recollect aspects of her past and discover what might remain in the present and future.

The mirage here is Soyolmaa's careful play between the identifiable detail and the imaginative scenes that she depicts. Temptingly beautiful and linked to the artist's personal memories, these images makes us wonder: do these places exist more in the world or in our imagination?

Dr. Christianna Bonin, Curator



Soyolmaa Tsegmid's art richly blends the visual symbolism and artistic techniques that she has honed through seven years of study at the Central Academy of Fine Arts, Beijing, with a focus in Chinese Traditional Painting.





PEONIES AND BUTTERFLIES, 2023
Pigment on silk, 72x54cm



IMPRESSION, 2011
Pigment on silk, 190x180cm



LOTUS, 2018
Mixed media, 100x100cm



LOTUS, 2018
Mixed media, 100x100cm

IMPRESSION-2, 2014
Pigment on silk, 240x70cm x3





DUNE 1, 2024
Pigment on silk, 100x100cm

DUNE 2, 2024
Pigment on silk, 100x100cm



There is a Mongolian idiom that says mountains are behind mountains and words are behind words. Can a person fully express his inner feelings with words? As long as there are thoughts behind words, feelings behind ideas, love behind hearts, faith behind love, etc., it is still far away. On the other hand, as long as it's getting bigger, it's getting bigger.

If it is true that we are the same people who exist at this moment, yesterday and tomorrow are different from today. I wanted to express the idea that every day we change and evolve with this Dune work. The lines are sometimes wavy and sometimes dry, different sensations that record my breath and the process of painting. The fact that the sand dune constantly changes its shape and position according to the wind is similar to human nature.

ONE HUNDRED YEARS OF SOLITUDE, 2023
Ink, pigment on rice paper, 200x120cm x3





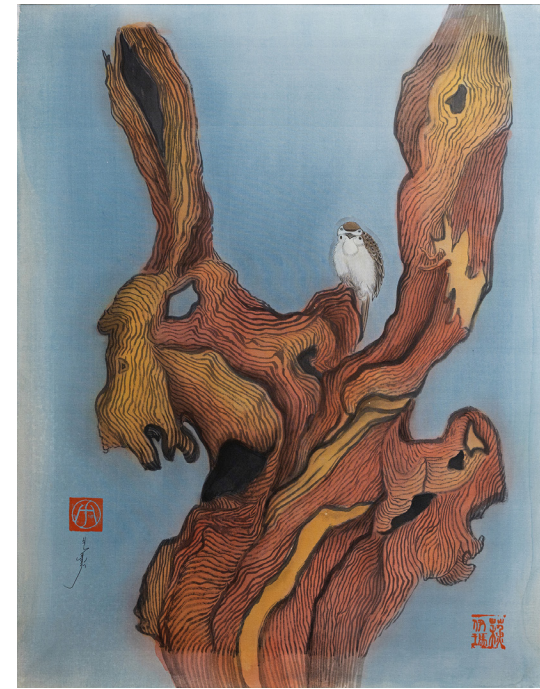
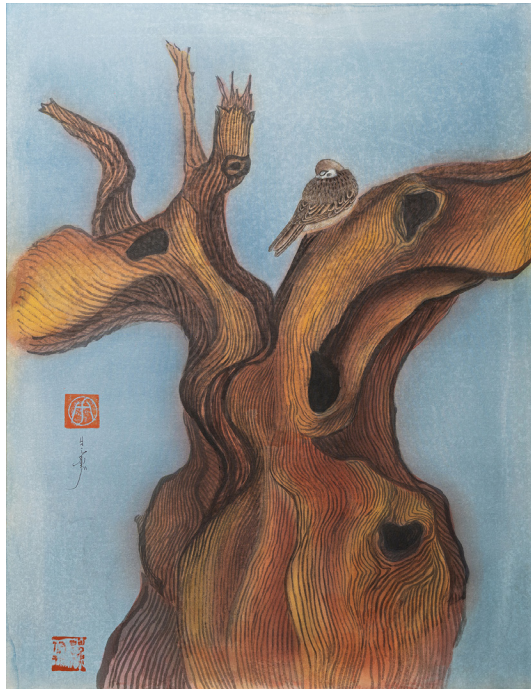
I was born in Dundgobi province and lived there until I was 3 years old, but the feeling that remained in my memory is really deep. Morning glory leaves a deep impression on the memory of a little girl who loved to see dirt, plants, and strange birds as a child. As the little girl grew up, she was always looking for these flowers, smells and colors in many places, but she could not find that feeling of her hometown anywhere else. Many years later, when I visited my hometown, I was greeted by those flowers, that smell, and that color everywhere.

When I visited my hometown after many years, I was greeted by the same flowers, the same smell, and the same color everywhere. I instinctively understood that my ancestors, my parents, and myself are inseparably connected with this land, and feeling the things that I had secretly been looking for for many years made me feel complete, and I thanked my hidden feelings about my destiny and my land.



HOMELAND 1, 2024
Pigment on silk , 100x100cm

HOMELAND 2, 2024
Pigment on silk , 100x100cm



LIFE 1, 2024
Pigment on silk , 80x60cm

LIFE 2, 2024
Pigment on silk , 80x60cm



THE WHITE PEACOCK, 2021
Pigment on rice paper, 200x96cm x4

ABOUT
LKHAM GALLERY

Based in Ulaanbaatar, Mongolia, Lkham Gallery strives to promote contemporary art and culture of the Mongolian-speaking world and the broader Central Asian region. Lkham represents both emerging and mid-career artists working in a wide range of media.

As the first gallery of its kind in Mongolia, Lkham envisions itself as an open door. Through regular exhibitions, publications, and a dynamic public program, the gallery aims to facilitate dialogue between local artists and the public, and to galvanize patronage of local artists throughout its community, the region, and beyond. Lkham also regularly hosts lectures by experts working in a variety of fields and will provide residency opportunities for local and international artists.

Founded in 2022 by entrepreneur Natsagsuren Mangalam, the gallery bears the name of her grandmother.

CONTACT US

Natsagsuren Mangalam / Founder

natsagsuren.m@fairmonflinch.com

Christianna Bonin, Ph.D / Creative Director, Curator

christianna.b@lkhamgallery.com

Ariunaa Byambajav / Manager

ariunaa.b@lkhamgallery.com

Manalsuren Bolor-Erdene / Marketing Manager

manala@lkhamgallery.com

+ 976 7570 8080

info@lkhamgallery.com

www.lkhamgallery.com

Central Park Office, 10th Floor, Sukhbaatar district,
1 khoroo, Ulaanbaatar, Mongolia 14240

@lkham_gallery

LKHAM